



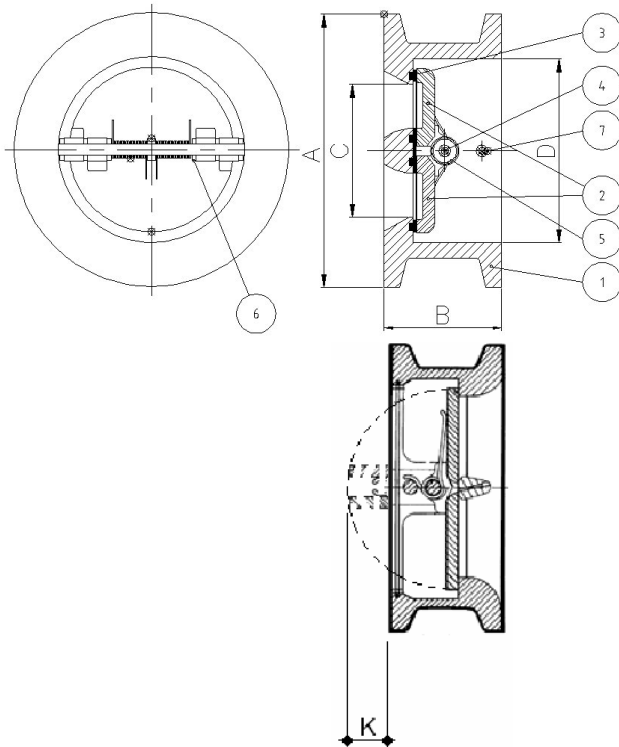
## STAINLESS STEEL VALVES

### GENEBRE PART: 2402 WAFER DOUBLE DISK CHECK VALVE, 25 BAR



#### SPECIFICATIONS

1	Material CF8M (SS316)
2	Sandwich mounts between PN10/16 or ASA150 flanges
3	Max working pressure 25 Bar
4	Max Temperature +180°C
5	Stainless shaft & spring
6	Vulcanised Viton seat (seat sits in groove)
7	Can accept vertical, horizontal or inclined flow
8	Face to face according to EN 558-1



#### DIMENSIONS

AVOL REF	SIZE mm	B mm	K mm	Wt Kg
2402 09	2"	54	0	1.62
2402 10	2 1/2"	54	7	2.10
2402 11	3"	57	13	2.55
2402 12	4"	64	25	4.10
2402 13	5"	70	36	6.50
2402 14	6"	76	42	8.30
2402 16	8"	95	61	16.50
2402 18	10"	108	75	19.80
2402 20	12"	143	65	35.90



## STAINLESS STEEL VALVES

### GENEBRE PART: 2402 WAFER DOUBLE DISK CHECK VALVE, 25 BAR

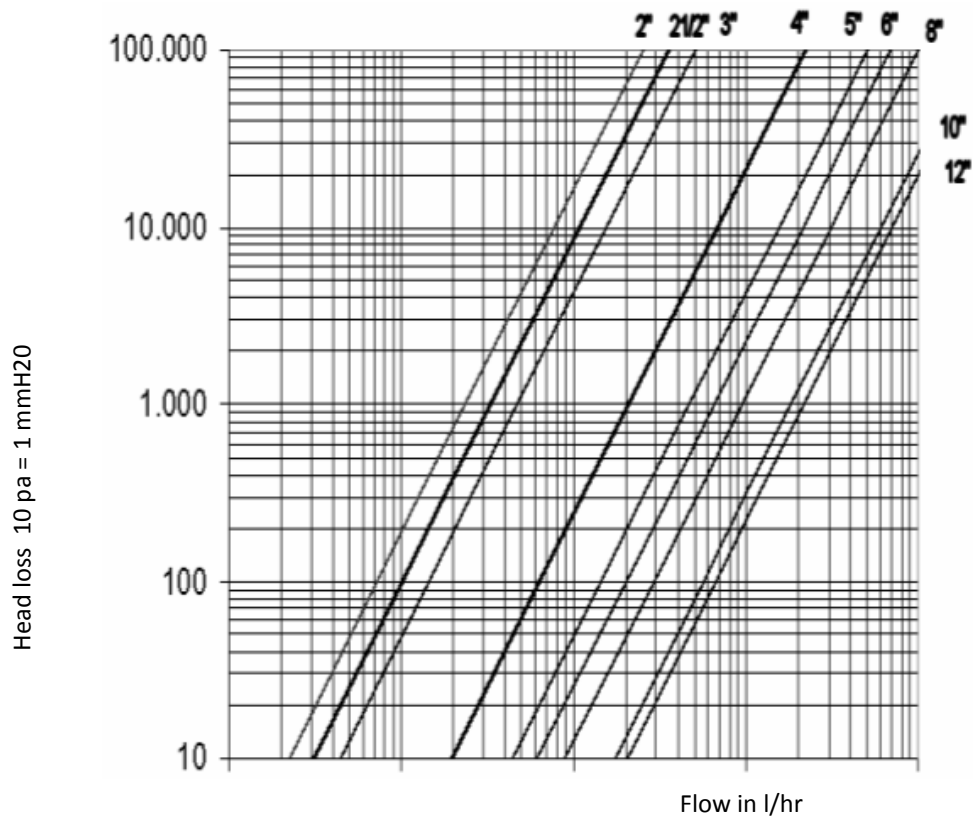
#### Kv VALUES

Inch	2"	2 1/2"	3"	4"	5"	6"	8"	10"	12"
Kv m <sup>3</sup> /h	25,00	35,00	50,00	220,00	500,00	690,00	1005,00	1950,00	2300,00

#### MINIMUM OPENING / CRACK PRESSURES

FLOW	Aplication	Pressure	2"	2 1/2"	3"	4"	5"	6"	8"	10"	12"
↑	with spring	mbar	22,8	22,8	22,8	24	24,5	24,7	25,4	26,6	27,3
→	with spring	mbar	22,4	22,4	22,4	23,5	24	24,1	24,7	25,8	26,4
↓	with spring	mbar	22	22	22	23	23,5	23,5	24	25	25,5
↑	without spring	mbar	0,4	0,4	0,4	0,5	0,5	0,6	0,7	0,8	0,9

#### HEAD LOSS DIAGRAM



Uncontrolled copy. Not subject to automatic updates. Subject to change without notice. AVOL 4-2011 Rev 0